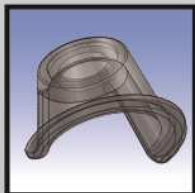


Application of PRO10 supporters



* 1

Shallow contact cap
To observe soft materials
like cloth · paper · hair ·
skin etc.



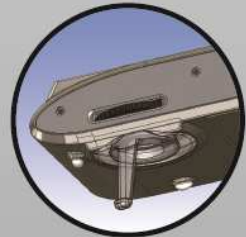
* 1
* 2

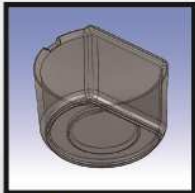
Deep contact cap
To observe · screw · coin
· SMT components etc.



* 1
* 2

Non-contact supporter
To observe wound · flower
· insect · narrow area etc.



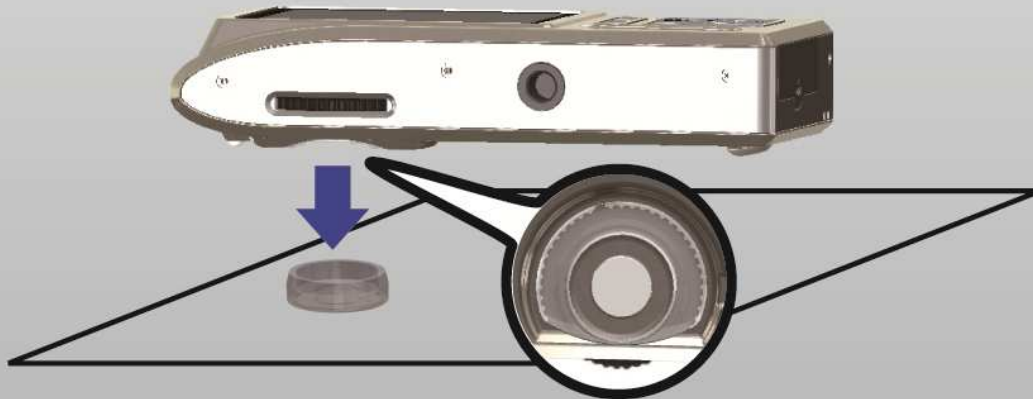


*2

Deep tank
To observe insects · rocks
etc, bigger objects.



Shallow tank
To observe fish eggs ·
spore · sand · drop ·
diamond etc.



- * 1 There is a magnet on the supporter to help attaching onto the lens.
- * 2 When it uses the supporter , the figure of the ruler function becomes invalid.